



Thank you for purchasing a Whip It Light Rod. Please read the installation and troubleshooting tips below.

Installation Tips

Always test the Whip It Light rod right out of the box by connecting the harness directly to the vehicle battery. Remove the plastic battery protector from the remote control and/or scan the QR code on the controller module to download the PRO RGB App. Ensure the light rod has been turned on using the remote control or app. If the lights do not work for this test, call, or email us for technical assistance.

- Determine location to install the light rod.
- Mount securely to machine and ensure spring is attached.
- Attach harness supplied to power (red wire) and to solid ground (black wire)
- **Ensure light rod power wire has slack to allow flexing for the spring.**
- A 8-10a fuse is recommended on the power side.

Troubleshooting Tips

- Ensure proper grounding.
- Ensure fuse is installed in holder.
- Ensure red wire is hot.
- Make sure you have the correct remote 21 Key Function (Chasing) or 17 Key Function (RGB).

WARRANTY

S & K Manufacturing Inc/Whip It Light Rods warrants our products to be free from manufacturing defects in material and workmanship for 12 months from date of purchase, subject to the terms and conditions provided in this Limited Warranty.

Terms and Conditions

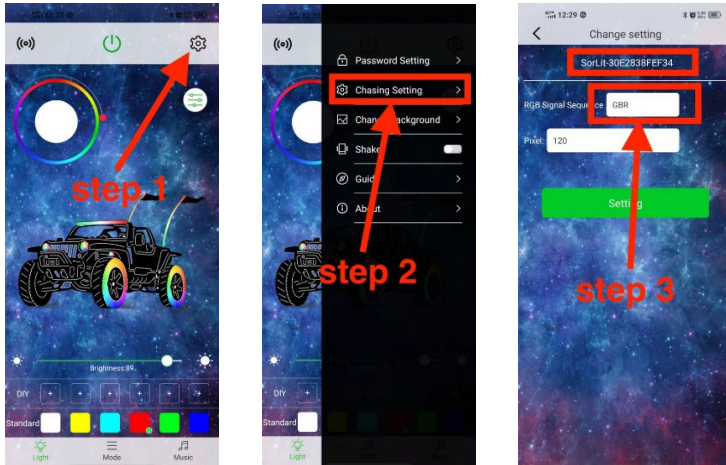
This Warranty is valid and applies only when Whip It Light Rod products are properly wired and installed in accordance with the product installation tips listed above and all applicable safety standards. Whip It Light Rods shall not be liable for any incidental or consequential damages in connection with the use of our products or for any indirect damages, including, but not limited to, damage to property. Our liability with respect to defects, is for replacement or repair of the defective product. Our Warranty does not apply to any of the following situations:

- Products that have been physically damaged or which have been subjected to abuse by the consumer.
- Products that have not been tested through direct connection to the vehicle battery as described in Installation Tips.
- Products that have been damaged due to improper installation.
- Products that show signs of gouges, impact scratches or cracks on the led tubes caused by consumer.
- Products that show tears in the shrink wrap caused by the consumer.
- Products that have been modified, altered or repaired by the consumer or installer. Altering includes, but is not

limited to, cutting wires on the controller, cutting the whips to be shorter, rewiring original wiring setup, changing the pin configuration, etc.).

- Products that have been submerged. Our whips are water resistant but full submersion voids the manufacturer defect warranty.

RGB Sequence Adjustment Pro RGB App



How to Make a Warranty Claim

In the event of a defective product claim, S & K Manufacturing, Inc./Whip It Light Rods requires you to complete this form and send a copy with your request for warranty. **Include proof of purchase.** We will complete a warranty inspection. If the claim is approved, we will replace or repair the light rod and ship it back to you at the address provided below.

WARRANTY CLAIM FORM	
First Name	
Last Name	
Email	
Place of Purchase Name, Address, City, State, Zip	
Product Description	
Defect Description	
Shipping Address Street, City, State, Zip	
Copy of Receipt Included?	

SHIP TO:

S & K Manufacturing Inc/Whip It Light Rods
 Warranty Claims
 2387 Vernon Rd
 Stoughton, WI 53589